

( )

**I.**

‘ ’가 . 가

가 . 가

, , .  
,

「International Seminar on Bilingualism」  
가

1960 Wales  
( , 1990:139).

가 .

,

가

, , 가 가

.

.1)

## II.

### 1.

(social behavior)

( ,1975:129).

3가

‘ (sociology of language)’

, , 가

(ethnography of speaking)

Hymes, Gumpers

가

(variants)

變異形

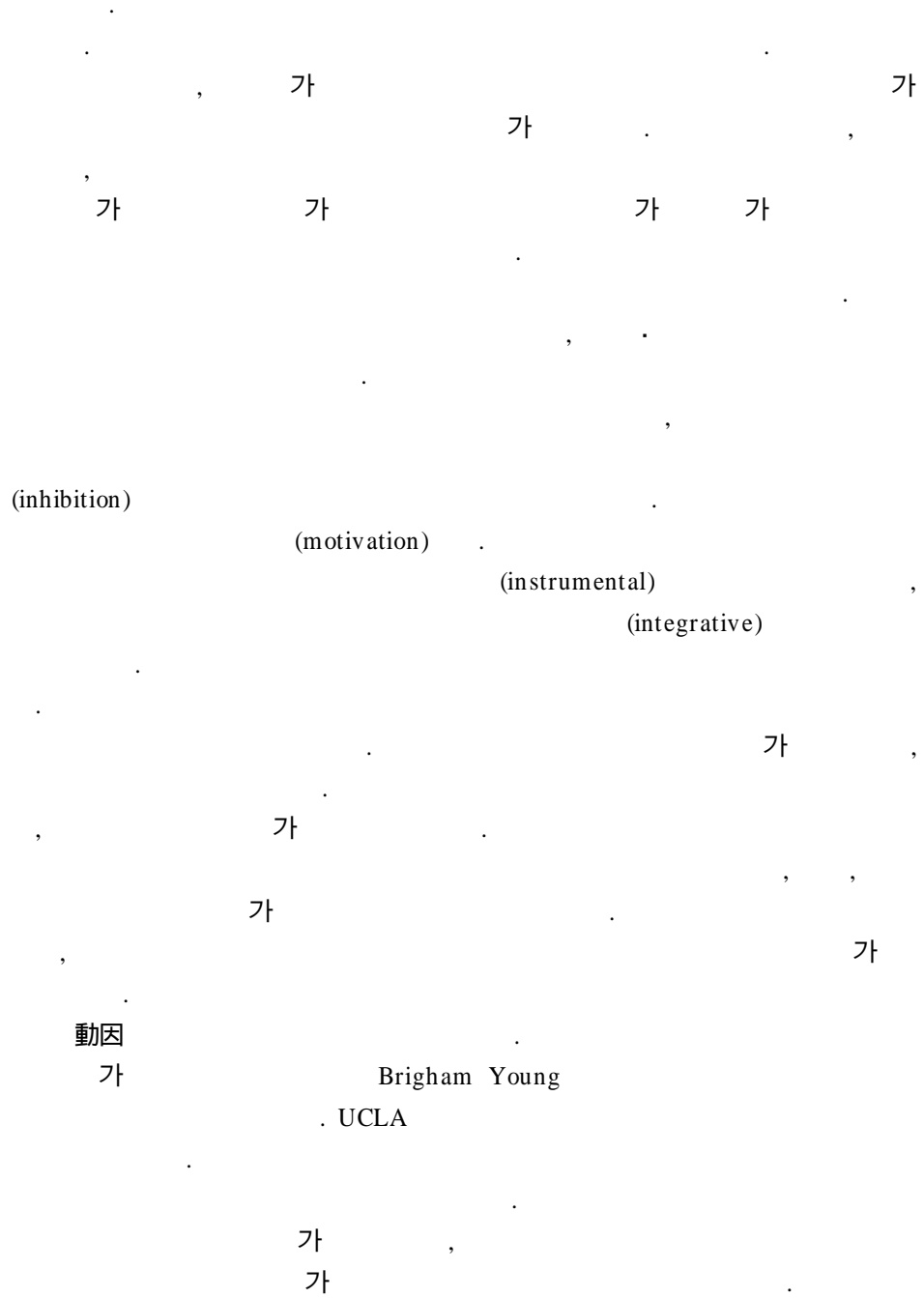
---

1)

(speech event) , 가 , , ,  
 Labov가 ‘ , ’  
 (general linguistics) , , ,  
 (linguistic rule) .  
 (speech community)  
 가  
 ( , 1994:33 ).  
 Fasold(1984)  
 가 . 가 가 가  
 가  
 (speech act)  
 가  
 Sohn(1991) ,

2.

, , , , , “  
 가 (critical period hypothesis)”  
 가



가 .  
 ( , 1989:49).  
 가  
 Sohn(1991:461- 462) 4가  
 , 가 가 , , 가 ,  
 가 , ,  
 , 가  
 , ,  
 , ,  
 , 가  
 가  
 , 2 , 2  
 , ,  
 2 , ,  
 가 가

III.

1) -communicative competence

가, ,

가

3가

(Richards and Rogers,1986:16- 17).

가

가

(for specific purpose)

(interaction analysis),

(conversation analysis),

(ethnomethodology)

(linguistic competence)

(linguistic performance)

( , 1995:411).

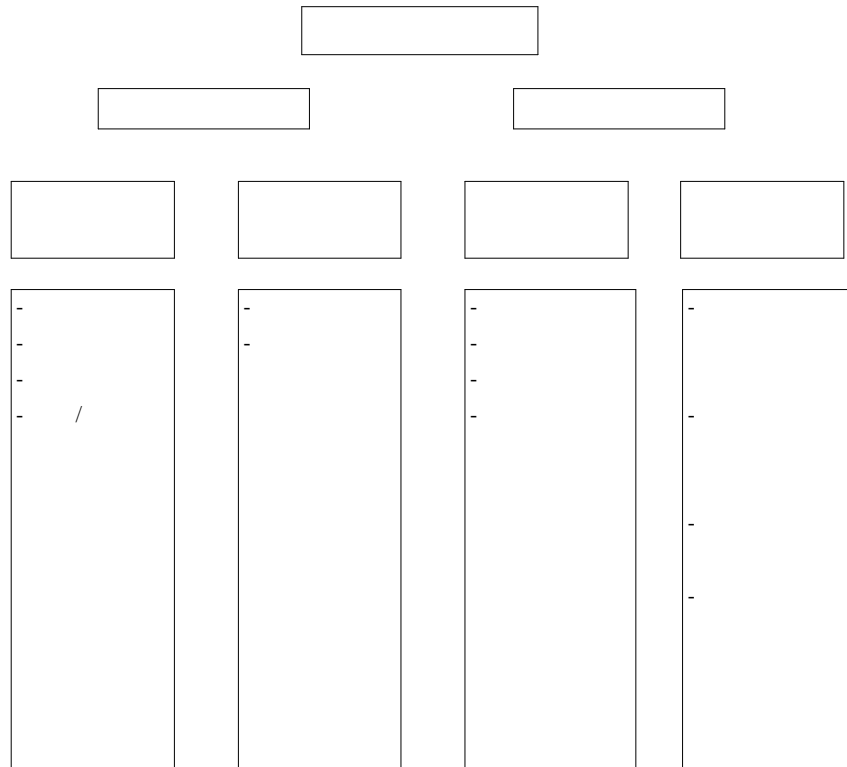
Hymes

competence

(communicative competence)

가

가



< 1> Bachman

가가

가

Canale & Swaine(1980)

가

가 language ability

1990 communicative competence

Bachman communicative (language competence),

(strategic competence), (psychophysiological mechanism)

Bachman

가 ability competence , 가 skill

가

< 1> 가

2) - ethnography

Method 가

(technique)

(selection)

(repetition) (Mackey, 1965)

(gradation), (presentation),

method methodology

(research) method

TESOL(Teaching English to Speakers of Other Languages)

(descriptive orientation), (interpretive)

, (ideological)

(Alister Cumming ed.,1994).

가 가

(analysis of learners' language),

(verbal reports on learning strategies),

가

(text analysis)

analysis)

(classroom interaction

(ethnography)

approaches to research) (critical pedagogical  
(participatory action research)

Richards Rogers(1986:28)  
Method

method

approach

1.  
-
2.  
-

design

- 1.
- 2.
- 3.

- 4.
- 5.
- 6.

procedure

- 1. , ,
- ,
- ,
- ,

< 2> Richards & Rogers (1986:28) Method

Richards Rogers , ,

(procedure) (approach)

(interaction analysis), (ethnography)  
가 가

가

Sohn(1991:478) 가  
Foreign Language) 'ACTFL(the American Council of Teaching  
(proficiency guidelines)'

(performance)

Ethnography

가

가

가

( ,1975:129)

3)

( )

.(Bachman,1990:94)

(1989) 2

가

가

가,

(1989) 2

가

Sohn(1991:465-476)

6가

: (1989)

, 가 , 情意 ,

:

:

(話階)

( ) :

:

가

가

( ,1993:59).

가

“- -”가

2 가 ‘ ’, ‘ ’, ‘ ’,  
‘ ’, ‘ ’,

( ,1994).

‘ ’, ‘ ’

是非 가

“ ‘ , ’ ”

1 가 ‘ ’ ‘ ’ ‘가 ’

가 “ ”, “ ”

”가

“I’m sorry.”

“ ” “ ”

가 . Sohn(1991:469)

A: ? ?

B: , ! . (- ).

가

가

4) -contextualization, real world(life)

가

(simulation)

(contextualization)

(Sohn,1991:482- 3).

3가

(Richards and Rogers,1986:72).



. , 가 가  
 . , , ,  
 .  
 가  
 가 ( , 가 ,  
 가 ) .  
 ;  
 , , , , , .  
 , < >  
 / 가 ?  
 > 가 가 .<  
 ? ?  
 ;  
 '가  
 가  
 가  
 '가  
 ; , 가  
 .  
 / ? 가 / / ? / / :  
 / ? , ? 가 ? 가 ? ,  
 가 . ? ? - ? ? ?

가 ? , 가 . 가 ? ? ? ?

IV.

가 ( , 1989:57). (Korean language proficiency guidelines) (Sohn, 1991:485).

ACTFL

가 가 가 가 가

가 , , , , 가

&lt; &gt;

- (1994) 5, .
- (1992) “ ”, .
- (1995) “ ”, .
- (1995) “ ”, .
- (1989) “ 2 ”, , .
- (1990) “ ”, 6.
- (1995) “ ”, .
- (1994) , .
- (1993) “ ”, .
- (1975) “ ”, 7 2 , .
- Alister Cumming ed. (1994) Alternatives in TESOL Research, *Tesol Quarterly*, Vol. 28, No. 4, TESOL, INC.
- Bachman (1990) *Fundamental Consideration in Language Teaching*, O.U.P.
- Brown, H. D., (1991) . , .
- Criper and Widdowson (1975) Sociolinguistics and Language Teaching, *Papers in Applied Linguistics*, Oxford University Press.
- Lee, W. R. (1994) *Language Teaching Games and Contests*, O.U.P.
- Mikhaltchenko (1991) Bilingual Education in the USSR from the Sociolinguistic Point of View, *Bilingual Education* 8.
- Richards and Rogers (1986) *Approaches and Methods in Language Teaching*, Cambridge University Press.
- Sohn Ho-min (1991) Sociolinguistic and pragmatic Appropriateness in Proficiency-Oriented Korean Language Instruction, *Bilingual Education* 8.